



Dealer: \_\_\_\_\_ Contact: \_\_\_\_\_ Date: \_\_\_\_\_

Address/City/St/Zip: \_\_\_\_\_

Phone: \_\_\_\_\_ FAX: \_\_\_\_\_ Email: \_\_\_\_\_

Clinician: \_\_\_\_\_ Phone: \_\_\_\_\_ Email: \_\_\_\_\_

Client: \_\_\_\_\_ Disability: \_\_\_\_\_ Misc.: \_\_\_\_\_

**LEVO USA**  
 10400 Fountains Drive Maple  
 Grove, MN 55369  
 888.538.6872 Toll Free  
 651.372.2299 FAX  
 888.LEVO.USA  
 Orders to: sales@levousa.com

### Standard Base Configuration

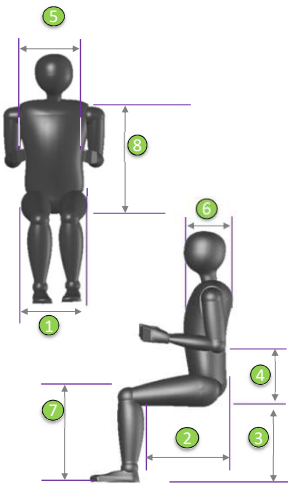
**\$11,295**

- Manually Propelled Wheelchair with Manual Standing System
- Maximum Client Weight: 265 lbs.
- Gas Strut Assist to Stand
- Lateral Lifting Arms/Sideguards
- Tension Adjustable Seat & Back Upholstery
- Fold Down, Angle Adjustable Backrest, Height Adjustable 12.5"-16"
- Rear Wheel - 24", high pressure pneumatic, hub black, 18 spoke silver
- Front Caster - solid rubber, composite wheel
- Standard Colors: platinum, red, yellow, blue or black
- One Piece Footplate - Fixed
- Camber - 0 Degree Rear



### Anatomical Dimensions

- Weight: \_\_\_\_\_
- Height: \_\_\_\_\_
- Hip Width: ①
- Upper Leg Length: ②
- Lower Leg Length: ③
- Seat to Elbow: ④
- Chest Width: ⑤
- Chest Depth: ⑥
- Floor to top of knee: ⑦
- Seat to Top of Shoulder: ⑧



### ① Hip width > Seat width

Hip width: \_\_\_\_\_

cm	in		
35 cm	13.75"		•
38 cm	15"		•
40 cm	15.75"		•
42 cm	16.5"		•
45 cm	17.75"		•
48 cm	19"		•

\$ 1,035

### ② Upper leg length/Seat depth (upholstery)

With proper seat depth, the ball of the knee should be vertically aligned with the Knee Block Mounting Post

Upper leg length: \_\_\_\_\_

Seat depth (upholstery): \_\_\_\_\_

Holes showing at rear of seat rail

cm	in	0	1	2	3	4	5
29.0 cm	11.5"	0					
31.2 cm	12"	1					
33.4 cm	13"	2					
35.6 cm	14"	3					
37.8 cm	15"	4					
40.0 cm	16"	5					
43.0 cm	17"	0					
45.2 cm	18"	1					
47.4 cm	18.5"	2					
49.6 cm	19.5"	3					
51.8 cm	20"	4					
54.0 cm	21"	5					

There are two ranges seat of depth adjustment for the LAE (S-M & L-XL)  
 Depth adjustment is made utilizing the telescoping upper and lower seat rails

### ③ Lower leg length/Seat to footplate

The *Lower leg length* determines the *Seat to footplate* setting, possible wheel/caster combinations and front seat heights.

Lower leg length: \_\_\_\_\_

Please take the cushion into consideration when choosing the *Seat to footplate* setting.

Seat Height Front: ▶	19"	20"	21"	22.5"
Rear Wheel	22"	24"	24"	26"
Seat to footplate: ▼	5" caster	5" caster	5" caster	6" caster
14"				
15"				
15.75"				
16.5"				
17.25"				
18"				
19"				
19.75"				
20.5"				
21.25"				

Rear seat height is approximately 1.5" lower than front

**Mandatory with 19" seat height**

Tire - 22" x 1" rear wheel- hub black, spoke silver with 5" front caster

Pair  \$ -

**Mandatory with 22.5" seat height**

Tire - 26" x 1" rear wheel- hub black, spoke silver with 6" front caster

**NONE**

Pair  \$ 325


**Client weight**

Client weight:

Gas strut selection chart

Depth: ► Weight: ▼	11.5" 29.0 cm	12" 31.2 cm	13" 33.4 cm	14" 35.6 cm	15" 37.8 cm	16" 40.0 cm	17" 43.0 cm	18" 45.2 cm	18.5" 47.4 cm	19.5" 49.6 cm	20" 51.8 cm
88 lbs. to 132 lbs.	400n	400n	400n	400n	400n	400n	400n	400n	400n	400n	
132 lbs. to 176 lbs.			400n	500n	500n	500n	500n	500n	500n	500n	
176 lbs. to 220 lbs.				500n	600n	600n	600n	600n	600n	600n	600n
220 lbs. to 264 lbs.							600n	700n	700n	700n	700n

**Frame color**



Black	<input type="checkbox"/>		•
Blue	<input type="checkbox"/>		•
Platinum	<input type="checkbox"/>		•
Red	<input type="checkbox"/>		•
Yellow	<input type="checkbox"/>		•
Blue metallic	Option <input type="checkbox"/>	\$ 595	
Green metallic	Option <input type="checkbox"/>	\$ 595	
Red metallic	Option <input type="checkbox"/>	\$ 595	
Silver metallic	Option <input type="checkbox"/>	\$ 595	
Orange reflex	Option <input type="checkbox"/>	\$ 695	
Lemon reflex	Option <input type="checkbox"/>	\$ 695	
Silver reflex	Option <input type="checkbox"/>	\$ 695	
Aluminium polished	Option <input type="checkbox"/>	\$ 995	
Traffic white	Option <input type="checkbox"/>	\$ 895	
Other RAL color	Option <input type="checkbox"/>	\$ 895	

**RAL: 9016**

**Standing Release**

Bilateral  •  
 Right  •  
 Left  •

**Backrest**

Backrest - height adjustable canes with tension adjustable sling and cushion

Upholstery height:

12.25"	<input type="checkbox"/>	•
13.00"	<input type="checkbox"/>	•
13.75"	<input type="checkbox"/>	•
14.5"	<input type="checkbox"/>	•
15.5"	<input type="checkbox"/>	•
16"	<input type="checkbox"/>	•

**Back - V-Trak "Dynamic Stability" with internal adjustable straps & laterals (flexes to absorb energy, .25" padded/breathable uph.)**  
 (must order mounting hardware)

V-TRAK Axis with parallel sides

Parallel Sides with 2-3 inches of contour depth

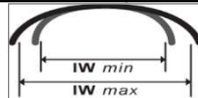


Internal adjustable spine profiling straps



Internal adjustable lateral support

Width ►	For Seat Width		For Seat Widths		For Seat Widths	
	13.75"		15" / 15.75" / 16.5"		17.75" / 19"	
① Height 12"	\$695	E2620	\$695	E2620	\$750	E2620
② Height 15.75"	\$695	E2620	\$695	E2620	\$750	E2620
③ Height 21.5"	\$750	E2620	\$775	E2620	\$795	E2620



V-TRAK Axis Deep Contour (Lateral crest is always 22cm from bottom)

Deep contour with 5-7 Inches of contour depth



Internal adjustable spine profiling straps

Internal adjustable lateral support - Lateral adjustment for front of backrest

Width ►	For Seat Width		For Seat Widths		For Seat Width		For Seat Width	
	13.75"		15" / 15.75" / 16.5"		17.75"		19"	
④ Height 12"	\$695	E2620	\$695	E2620	\$750	E2620	\$850	E2620
⑤ Height 15.75"	\$775	E2620	\$795	E2620	\$825	E2620	\$850	E2620
⑤ Height 21.5"	\$775	E2620	\$795	E2620	\$825	E2620	\$850	E2620

55 cm  
21.5"

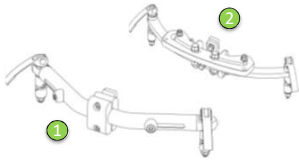
40cm  
15.75"

30cm  
12"

40cm  
15.75"

52cm  
21.5"

**V-Trak Mounting Hardware - Adjustable**



①	Lite - tube style	NONE	E1028	\$ 292
②	Original - flat style <i>(recommended for chair back widths over 19")</i>		E1028	\$ 292

**Backrest options**

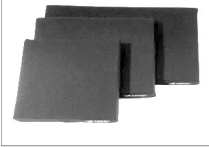


③	Standard Backrest - 6" tube extension for sling back <i>(for raising back height 17" to 22")</i>	NONE	K0108	\$ 369
	V-Trak backrest - 8" extension		K0108	\$ 543

**Backrest angle**

85°		•
90°		•
95°		•

**Seat Cushion - memory foam with cover**



<b>Seat width</b> ▶	13.75"	15"	15.75"	16.5"	17.75"	19"		
<b>Seat depth</b> ▼	35 cm	36 cm	37 cm	38 cm	39 cm	40 cm	E2601	\$ 397

*Matches seat depth unless otherwise specified*

**Additional Seat Cushion Cover**

Standard	NONE	E2619	\$ 219
Incontinent		E2619	\$ 219

**Supports**



①	Knee support - Padded and reinforced		K0108	\$ 172
②	Rectangular knee wedge	NONE	2" x 4" K0108	\$ 35
			2.5" x 4" K0108	\$ 35
			3" x 4" K0108	\$ 35
			2" x 6" K0108	\$ 35
			3" x 6" K0108	\$ 35
③	Conical knee wedge		2" - 4" x 4" K0108	\$ 35
			3.5" - 4.5" x 4" K0108	\$ 35
			5" - 7" x 4" K0108	\$ 35
④	Knee support - Sport		K0108	\$ 295
⑤	Knee support - Polyurethane pad, rigid tube, swing away Gelovations knee block pad mount with cover for swing away Calf strap (see pict #1 below) Chest support belt		Size S (4" - 4.75") K0108	\$ 545
			Size M (5.5" - 6.5") K0108	\$ 545
			Gelovations - Pair K0108	\$ 218
			K0038 X	\$ 73
			E0960 X	\$ 120
			E0960	\$ 195
⑥	Additional Chest support - BodyPoint Neoprene- 4.5" wide - SP110L			
⑦	Shoe Holder		3.75" x 7.25" Small Right K0108	\$ 213
			3.75" x 7.25" Small Left K0108	\$ 213
			4.5" x 8" Large Right K0108	\$ 233
			4.5" x 8" Large Left K0108	\$ 233
	Hip Belt - Push Button		E0978	\$ 119

**Footrest**



①	One piece footplate, fixed		Std.	•
②	Two-piece footplate, flip-up		K0108	\$ 285
③	One piece footplate, flip-up (back) <i>(not available with footrest height adapter)</i>		K0040	\$ 219
④	Footplate height adapter <i>(available only with one piece footplate, fixed) (footplate will be 1" narrower than normal)</i>		For seat widths 15", 17.75" & 19" K0108	\$ 69
			For seat widths 15.75" & 16.5" K0108	\$ 225
⑤	Easy transfer footplate <i>(extended "L" brackets bring footplate closer to the floor)</i>		Footplate Depth 8" K0040	\$ 388
			Footplate Depth 10.25" K0040	\$ 388
	Detachable legrest/downposts		K0108	\$ 149
	Non-slip footplate surface		K0108	\$ 129

**Footplate angle**

80°	K0040	\$	99
90°	K0040	\$	99
100°	K0040	\$	99

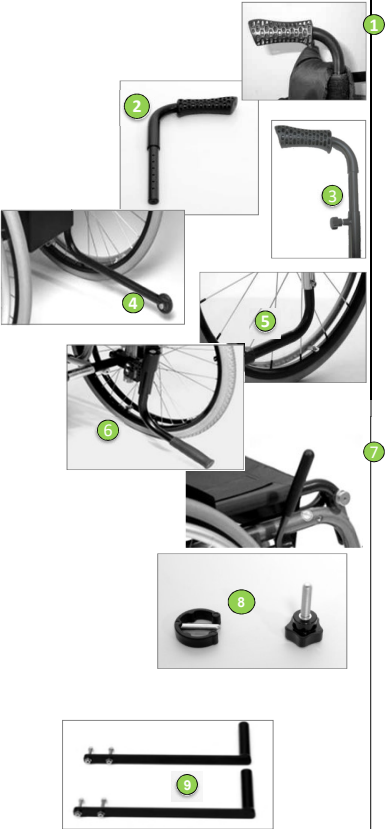
**Wheel options**



Rear Wheel	Wheel Type	Tire				Handrim						Spoke Color				
		1" Gray High Pressure Pneumatic	1" Blk Marathon High Pressure \$125	1" Black Marathon Solid Poly \$159	1" Gray Solid Poly - Solid Poly \$159	Steel \$132	Steel - embossed \$132	Aluminum Clear Anodized	Maxgrepp - Rubber Coated \$578	Maxgrepp - Ergo Para CP \$995	Natural Fit \$578	Natural Fit /Thumbguard \$995	Natural Fit SLT \$578	White	Red	Black
22"	Standard 18 Spoke - 22", hub black, spoke silver															
	Spinerger 12 Spoke - 22", hub silver															
	Spinerger 18 Spoke - 22", hub silver															
24"	Standard 18 spoke - 24", hub black, spoke silver															
	Spinerger 12 Spoke - 24", hub silver															
	Spinerger 18 Spoke - 24", hub silver															
26"	Standard 18 spoke - 26", hub black, spoke silver															
	Spinerger 12 Spoke - 26", hub silver															
	Spinerger 18 Spoke - 26", hub silver															

4	Camber	0°	3°	6°												
5	Spoke protectors - transparent				Pair	K0108										\$ 274
						K0065										\$ 186

**Accessories**



1	Push handles	Pair	K0108													\$ 175
2	Push handles - 2.75" extension	Pair	K0108													\$ 338
3	Push handles - detachable, height adjustable 1" - 6"	Pair	K0108													\$ 349
4	Anti Tips - traditional	Pair	E0971													\$ 152
5	Tip Aid - attendant	Pair	K0108													\$ 85
6	Anti Tips - swingaway with attendant tip aid	Pair	K0108													\$ 450
	XL Adapter*	Pair	K0108													\$ 152
	<i>*Necessary with swingaway anti-tips on extra long (XL) frame</i>															
7	Wheel lock extension - 2.5"	Pair	E0961													\$ 150
8	Seat depth and footrest quick adjustment kit		K0108													\$ 129
	<i>Includes 10 clamps with post and 4 threaded knobs</i>															
	Frame reinforcement kit		K0108													\$ 290
	<i>Necessary when e-fix or similar system is mounted</i>															
	<i>Anti-tips - swingaway required</i>															
9	Vehicle tie-down kit		K0108													\$ 988
	<i>Fixed attachment points for chair transport</i>															
	<i>Includes frame reinforcement kit</i>															
	<i>Anti-tips - swingaway required</i>															

Mandatory if client is transported in vehicle. Chair required to be secured with the Q'Straint 5001-T2 or any restraint system certified by Q'Straint 5001-T2. Occupant must be secured using the Q'Straint Vehicle 3 point or any restraint system certified by ISO 10542/2 standards.

Remarks