



Dealer: _____ Contact: _____ Date: _____

Address/City/St/Zip: _____

Phone: _____ FAX: _____ Email: _____

Clinician: _____ Phone: _____ Email: _____

Client: _____ Disability: _____ Misc.: _____

LEVO USA
 10400 Fountains Drive
 Maple Grove, MN 55369
 Toll Free: 888-538-6872
 FAX: 763-582-0442
 Orders to: sales@levousa.com

Standard Base Configuration

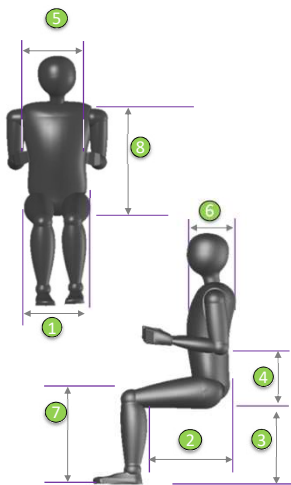
\$11,870



- Manually Propelled Wheelchair with Manual Standing System
- Maximum Client Weight: 265 lbs.
- Gas Strut Assist to Stand
- Lateral Lifting Arms/Side Guards
- Tension Adjustable Seat & Back Upholstery
- Fold Down, Angle Adjustable Backrest, Height Adjustable 12.5"-16"
- Rear Wheel - 24", high pressure pneumatic, hub black, 18 spoke
- silver w/aluminum hand rim
- Front Caster - solid rubber, composite wheel
- Standard Colors: platinum, red, yellow, blue or black
- 1 Piece Footplate - Fixed
- Camber - 0 Degree Rear
- Standard Push to Lock Brakes

Anatomical Dimensions

- Weight: _____
- Height: _____
- Hip Width: ①
- Upper Leg Length: ②
- Lower Leg Length: ③
- Seat to Elbow: ④
- Chest Width: ⑤
- Chest Depth: ⑥
- Floor to top of knee: ⑦
- Seat to Top of Shoulder: ⑧



① Hip width > Seat width

Hip width: _____

Seat width:		
35 cm	13.75"	E1235
38 cm	15"	
40 cm	15.75"	
42 cm	16.5"	
45 cm	17.75"	
48 cm	19"	

\$ 1,035

② Upper leg length/Seat depth (upholstery)

With proper seat depth, the ball of the knee should be vertically aligned with the Knee Block Mounting Post

Upper leg length: _____

The seat depth of the upholstery is approximately 1.5" to 2" from the back of the knee

Seat depth (upholstery):

Seat Depth (cm)	Seat Depth (in)	Holes showing at rear of seat rail	
29.0 cm	11.5"	0	
31.2 cm	12"	1	
33.4 cm	13"	2	
35.6 cm	14"	3	
37.8 cm	15"	4	
40.0 cm	16"	5	
43.0 cm	17"	0	
45.2 cm	18"	1	
47.4 cm	18.5"	2	
49.6 cm	19.5"	3	
51.8 cm	20"	4	
54.0 cm	21"	5	

There are two ranges seat of depth adjustment for the LAE (S-M & L-XL)
 Depth adjustment is made utilizing the telescoping upper and lower seat rails

③ Lower leg length/Seat to footplate

The *Lower leg length* determines the *Seat to footplate* setting, possible wheel/caster combinations and front seat heights.

Lower leg length: _____

Please take the cushion into consideration when choosing the *Seat to footplate* setting.

Seat Height Front: ▶	19"	20"	21"	22.5"
Rear Wheel	22"	24"	24"	26"
Seat to footplate: ▼	5" caster	5" caster	5" caster	6" caster
14"				
15"				
15.75"				
16.5"				
17.25"				
18"				
19"				
19.75"				
20.5"				
21.25"				

Rear seat height is approximately 1.5" lower than front

Mandatory with 19" seat height
 Tire - 22" x 1" rear wheel- hub black, spoke silver with 5" front caster

Pair \$ -

Mandatory with 22.5" seat height
 Tire - 26" x 1" rear wheel- hub black, spoke silver with 6" front caster

NONE

Pair \$ 351


Client weight

Client weight:

Gas strut selection chart

Depth: ► Weight: ▼	11.5" 29.0 cm	12" 31.2 cm	13" 33.4 cm	14" 35.6 cm	15" 37.8 cm	16" 40.0 cm	17" 43.0 cm	18" 45.2 cm	18.5" 47.4 cm	19.5" 49.6 cm	20" 51.8 cm
88 lbs. to 132 lbs.	400n	400n	400n	400n	400n	400n	400n	400n	400n	400n	
132 lbs. to 176 lbs.			400n	500n	500n	500n	500n	500n	500n	500n	
176 lbs. to 220 lbs.				500n	600n	600n	600n	600n	600n	600n	600n
220 lbs. to 264 lbs.							600n	700n	700n	700n	700n

Frame color



Black			•
Blue			•
Champagne			•
Red			•
Yellow			•
Blue metallic	Option		\$ 595
Green metallic	Option		\$ 595
Red metallic	Option		\$ 595
Silver metallic	Option		\$ 595
Orange reflex	Option		\$ 695
Lemon reflex	Option		\$ 695
Silver reflex	Option		\$ 695
Aluminium polished	Option		\$ 995
Traffic white	Option		\$ 895
Other RAL color	Option		\$ 895

Standing Release

Bilateral

Right

Left

Backrest

Backrest - height adjustable canes with tension adjustable sling and cushion

Upholstery height:

12.25"		•
13.00"		•
13.75"		•
14.5"		•
15.5"		•
16"		•

Back - V-Trak "Dynamic Stability" with internal adjustable straps & laterals (flexes to absorb energy, .25" padded/breathable uph.)
(must order mounting hardware)

V-TRAK Axis with parallel sides

Parallel Sides with 2-3 inches of contour depth



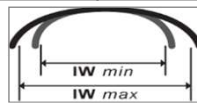
Internal adjustable spine profiling straps



Internal adjustable lateral support

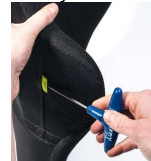
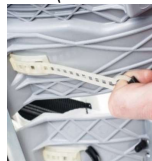
Width	For Seat Width		For Seat Widths		For Seat Widths	
	13.75"		15" / 15.75" / 16.5"		17.75" / 19"	
① Height 12"	\$695	E2620	\$695	E2620	\$750	E2620
② Height 15.75"	\$695	E2620	\$695	E2620	\$750	E2620
③ Height 21.5"	\$750	E2620	\$775	E2620	\$795	E2620

Note: The 21.5" high backrest can't be used on seat width of 13.75"



V-TRAK Axis Deep Contour (Lateral crest is always 22cm from bottom)

Deep contour with 5-7 inches of contour depth



Internal adjustable spine profiling straps

Internal adjustable lateral support - Lateral adjustment for front of backrest

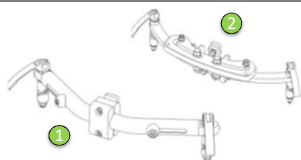
Width	For Seat Width		For Seat Widths		For Seat Width		For Seat Width	
	13.75"		15" / 15.75" / 16.5"		17.75"		19"	
④ Height 12"	\$695	E2620	\$695	E2620	\$750	E2620	\$850	E2620
⑤ Height 15.75"	\$775	E2620	\$795	E2620	\$825	E2620	\$850	E2620
⑥ Height 21.5"	\$775	E2620	\$795	E2620	\$825	E2620	\$850	E2620

Note: The 21.5" high backrest can't be used on seat width of 13.75"

③ 55 cm / 21.5" | ② 40 cm / 15.75" | ① 30 cm / 12"

④ 40 cm / 15.75" | ⑤ 52 cm / 21.5"

V-Trak Mounting Hardware - Adjustable



①	Lite - tube style	NONE	E1028	\$ 292
②	Original - flat style <i>(recommended for chair back widths over 19")</i>		E1028	\$ 292

Backrest options

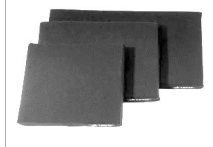


③	Standard Backrest - 6" tube extension for sling back <i>(for raising back height 17" to 22")</i>	NONE	K0108	\$ 369
	V-Trak backrest - 8" extension		K0108	\$ 543

Backrest angle

85°			•
90°			•
95°			•

Seat Cushion - memory foam with cover



Seat width ▶	13.75"	15"	15.75"	16.5"	17.75"	19"		
Seat depth ▼	35 cm	36 cm	37 cm	38 cm	39 cm	40 cm	E2601	\$ 429

Matches seat depth unless otherwise specified

Additional Seat Cushion Cover

Standard	NONE	E2619	\$ 237
Incontinent		E2619	\$ 237

Supports



①	Knee support - Padded and reinforced		K0108	\$ 186
②	Rectangular knee wedge	NONE	2" x 4" K0108	\$ 38
			2.5" x 4" K0108	\$ 38
			3" x 4" K0108	\$ 38
			2" x 6" K0108	\$ 38
			3" x 6" K0108	\$ 38
③	Conical knee wedge		2" - 4" x 4" K0108	\$ 38
			3.5" - 4.5" x 4" K0108	\$ 38
			5" - 7" x 4" K0108	\$ 38
④	Knee support - Sport		K0108	\$ 319
⑤	Knee support - Polyurethane pad, rigid tube, swing away	Size S (4" - 4.75")	K0108	\$ 589
	Gelovations knee block pad mount with cover for swing away	Size M (5.5" - 6.5")	K0108	\$ 589
	Calf strap (see pict #1 below)	Gelovations - Pair	K0108	\$ 325
	Chest support belt		K0038	\$ 79
⑥	Additional Chest support - BodyPoint Neoprene- 4.5" wide - SP110L		E0960	\$ 130
			E0960	\$ 144
⑦	Shoe Holder	3.75" x 7.25" Small Right	K0108	\$ 230
		3.75" x 7.25" Small Left	K0108	\$ 230
		4.5" x 8" Large Right	K0108	\$ 252
		4.5" x 8" Large Left	K0108	\$ 252
	Hip Belt - Airplane pull		E0978	\$ 129

Footrest



①	One piece footplate, fixed		Std.	•
②	Two-piece footplate, flip-up		K0108	\$ 308
③	One piece footplate, flip-up (back)		K0040	\$ 237
④	Footplate height adapter <i>(footplate will be 1" narrower than normal)</i>	For seat widths 13.75", 15", 17.75" & 19"		\$ 75
		For seat widths 15.75" & 16.5"		\$ 243
⑤	Easy transfer footplate <i>(extended "L" brackets bring footplate closer to the floor)</i>	Footplate Depth 8"	K0040	\$ 419
	Detachable legrest/downposts	Footplate Depth 10.25"	K0040	\$ 419
			K0108	\$ 161
	Non-slip footplate surface		K0108	\$ 139

Footplate angle

80° K0040
 90° K0040
 100° K0040

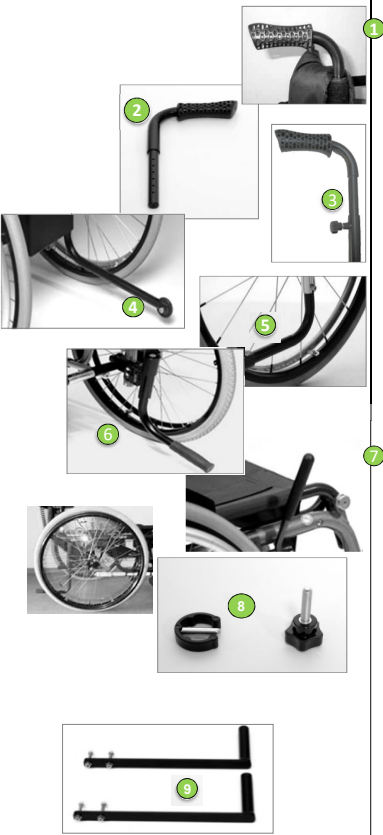
Wheel options



Rear Wheel	Wheel Type	Tire				Handrim				Spoke Color						
		1" Gray High Pressure Pneumatic \$125	1" Blk Marathon High Pressure \$172	1" Black Marathon Solid Poly \$172	1" Gray Solid Poly - Solid Poly \$172	Steel \$132	Steel - embossed \$578	Aluminum Clear Anodized	Maxgrepp - Rubber Coated \$578	Maxgrepp - Ergo Para CP \$995	Natural Fit \$578	Natural Fit /Thumbguard \$995	Natural Fit SLT \$578	White	Red	Black
22"	Standard 18 Spoke - 22", hub black, spoke silver															
	Spinery 12 Spoke - 22", hub silver \$925															
	Spinery 18 Spoke - 22", hub silver \$697															
24"	Standard 18 spoke - 24", hub black, spoke silver															
	Spinery 12 Spoke - 24", hub silver \$925															
	Spinery 18 Spoke - 24", hub silver \$697															
26"	Standard 18 spoke - 26", hub black, spoke silver															
	Spinery 12 Spoke - 26", hub silver \$925															
	Spinery 18 Spoke - 26", hub silver \$697															

4	Camber	0°	3°	6°	Pair	K0108		\$	296
	Frog Legs-Black Carbon Fiber Forks & Casters				Pair	K0108		\$	525

Accessories



1	Push handles	Pair	K0108		\$	189
2	Push handles - 2.75" extension	Pair	K0108		\$	365
3	Push handles - detachable, height adjustable 1" - 6"	Pair	K0108		\$	378
4	Anti Tips - traditional	Pair	E0971		\$	164
5	Tip Aid - attendant	Pair	K0108		\$	92
6	Anti Tips - swing away with attendant tip aid XL Adapter*	Pair	K0108		\$	486
		Pair	K0108		\$	164
	<i>*Necessary with swing away anti-tips for seat depth positions- of 19.5", 20" & 21" when not using E-Fix or E-Motion wheels- Use of E-Fix or E-Motion wheels in these seat depths require Anti-tips provided by Alber</i>					
7	Push to Lock- Wheel lock extensions- 2.5"	Pair	E0961		\$	162
	Spoke Guards- Transparent	Pair	K0065		\$	201
8	Seat depth and footrest quick adjustment kit Includes 8 clamps with post and 4 threaded knobs		K0108		\$	139
	Frame reinforcement kit Necessary when e-fix or similar system is mounted Anti-tips - swing away required		K0108		\$	313
9	Vehicle tie-down kit Fixed attachment points for chair transport Includes frame reinforcement kit Anti-tips - swing away required. Note: When using E-Fix or E-Motion wheels for seat depth positions of 19.5", 20" & 21" Anti-tips provided by Alber are required		K0108		\$	1,067

Mandatory if client is transported in vehicle. Chair required to be secured with the Q'Straint 5001-T2 or any restraint system certified by Q'Straint 5001-T2. Occupant must be secured using the Q'Straint Vehicle 3 point or any restraint system certified by ISO 10542/2 standards.

Remarks