



Dealer: \_\_\_\_\_ Contact: \_\_\_\_\_ Date: \_\_\_\_\_

Address/City/St/Zip: \_\_\_\_\_

Phone: \_\_\_\_\_ FAX: \_\_\_\_\_ Email: \_\_\_\_\_

Clinician: \_\_\_\_\_ Phone: \_\_\_\_\_ Email: \_\_\_\_\_

Client: \_\_\_\_\_ Disability: \_\_\_\_\_ Misc.: \_\_\_\_\_

**LEVO USA**  
 10400 Fountains Drive  
 Maple Grove, MN 55369  
 Toll Free: 888-538-6872  
 FAX: 763-582-0442  
 Orders to: sales@levousa.com

### Standard Base Configuration

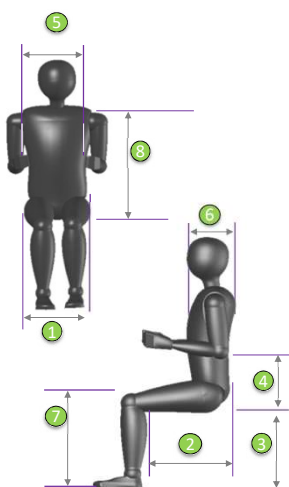
**\$11,870**

- Manually Propelled Wheelchair with Manual Standing System
- Maximum Client Weight: 265 lbs.
- Gas Strut Assist to Stand
- Lateral Lifting Arms/Sideguards
- Tension Adjustable Seat & Back Upholstery
- Fold Down, Angle Adjustable Backrest, Height Adjustable 12.5"-16"
- Rear Wheel - 24", high pressure pneumatic, hub black, 18 spoke silver
- Front Caster - solid rubber, composite wheel
- Standard Colors: platinum, red, yellow, blue or black
- One Piece Footplate - Fixed
- Camber - 0 Degree Rear
- Standard Push to Lock Brakes



#### Anatomical Dimensions

- Weight: \_\_\_\_\_
- Height: \_\_\_\_\_
- Hip Width: ①
- Upper Leg Length: ②
- Lower Leg Length: ③
- Seat to Elbow: ④
- Chest Width: ⑤
- Chest Depth: ⑥
- Floor to top of knee: ⑦
- Seat to Top of Shoulder: ⑧



#### ① Hip width > Seat width

Hip width: \_\_\_\_\_

Seat width:		
35 cm	13.75"	
38 cm	15"	
40 cm	15.75"	
42 cm	16.5"	
45 cm	17.75"	
48 cm	19"	\$ 1,035

#### ② Upper leg length/Seat depth (upholstery)

With proper seat depth, the ball of the knee should be vertically aligned with the Knee Block Mounting Post

Upper leg length: \_\_\_\_\_

The seat depth of the upholstery is approximately 1.5" to 2" from the back of the knee

Seat depth (upholstery): \_\_\_\_\_

Holes showing at rear of seat rail

Seat Depth (cm)	Seat Depth (in)	Holes showing at rear of seat rail	
29.0 cm	11.5"	0	
31.2 cm	12"	1	
33.4 cm	13"	2	
35.6 cm	14"	3	
37.8 cm	15"	4	
40.0 cm	16"	5	
43.0 cm	17"	0	
45.2 cm	18"	1	
47.4 cm	18.5"	2	
49.6 cm	19.5"	3	
51.8 cm	20"	4	
54.0 cm	21"	5	

There are two ranges seat of depth adjustment for the LAE (S-M & L-XL)  
 Depth adjustment is made utilizing the telescoping upper and lower seat rails

#### ③ Lower leg length/Seat to footplate

The *Lower leg length* determines the *Seat to footplate* setting, possible wheel/caster combinations and front seat heights.

Lower leg length: \_\_\_\_\_

Please take the cushion into consideration when choosing the *Seat to footplate* setting.

Seat Height Front: ▶	19"	20"	21"	22.5"
Rear Wheel	22"	24"	24"	26"
Seat to footplate: ▼	5" caster	5" caster	5" caster	6" caster
14"				
15"				
15.75"				
16.5"				
17.25"				
18"				
19"				
19.75"				
20.5"				
21.25"				

Rear seat height is approximately 1.5" lower than front

**Mandatory with 19" seat height**

Tire - 22" x 1" rear wheel- hub black, spoke silver with 5" front caster

Pair  \$ -

**Mandatory with 22.5" seat height**

Tire - 26" x 1" rear wheel- hub black, spoke silver with 6" front caster

NONE

Pair  \$ 325

**Client weight**

Client weight:

Gas strut selection chart

Depth: ► Weight: ▼	11.5" 29.0 cm	12" 31.2 cm	13" 33.4 cm	14" 35.6 cm	15" 37.8 cm	16" 40.0 cm	17" 43.0 cm	18" 45.2 cm	18.5" 47.4 cm	19.5" 49.6 cm	20" 51.8 cm
88 lbs. to 132 lbs.	400n	400n	400n	400n	400n	400n	400n	400n	400n	400n	
132 lbs. to 176 lbs.			400n	500n	500n	500n	500n	500n	500n	500n	
176 lbs. to 220 lbs.				500n	600n	600n	600n	600n	600n	600n	600n
220 lbs. to 264 lbs.							600n	700n	700n	700n	700n

**Frame color**

All color choices marked with • are no charge



- Black
- Blue
- Wine Red
- Red
- Yellow
- Blue metallic
- Green metallic
- Red metallic
- Silver metallic
- Orange reflex
- Lemon reflex
- Silver reflex
- White Aluminum
- Traffic White
- Other RAL

			•
			•
			•
			•
			•
Option		\$	495
Option		\$	•
Option		\$	495
Option		\$	495
Option		\$	595
Option		\$	595
Option		\$	595
Option		\$	•
Option		\$	•
Option		\$	695

RAL:

**Standing Release**

Bilateral		
Right		
Left		

**Backrest**

Backrest - height adjustable canes with tension adjustable sling and cushion

Upholstery height:	WAMD		\$
12.25"	WAMD		121
13.00"	WAMD		121
13.75"	WAMD		121
14.5"	WAMD		121
15.5"	WAMD		121
16"	WAMD		121

**Back - V-Trak "Dynamic Stability" with internal adjustable straps & laterals (flexes to absorb energy, .25" padded/breathable uph.)**  
(must order mounting hardware)

V-TRAK Axis with parallel sides

Parallel Sides with 2-3 inches of contour depth



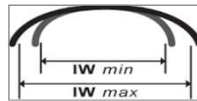
Internal adjustable spine profiling straps



Internal adjustable lateral support

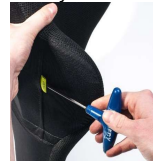
Width	For Seat Width	For Seat Widths	For Seat Widths
	13.75"	15" / 15.75" / 16.5"	17.75" / 19"
① Height 12"	\$695	\$695	\$750
② Height 15.75"	\$695	\$695	\$750
③ Height 21.5"	\$750	\$775	\$795

Note: The 21.5" high backrest can't be used on seat width of 13.75"



V-TRAK Axis Deep Contour (Lateral crest is always 22cm from bottom)

Deep contour with 5-7 inches of contour depth



Internal adjustable spine profiling straps

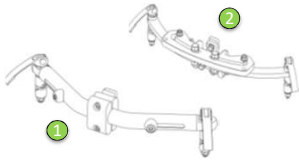
Internal adjustable lateral support - Lateral adjustment for front of backrest

Width	For Seat Width	For Seat Widths	For Seat Width	For Seat Width
	13.75"	15" / 15.75" / 16.5"	17.75"	19"
④ Height 12"	\$695	\$695	\$750	\$850
⑤ Height 15.75"	\$775	\$795	\$825	\$850
⑥ Height 21.5"	\$775	\$795	\$825	\$850

Note: The 21.5" high backrest can't be used on seat width of 13.75"



**V-Trak Mounting Hardware - Adjustable**



①	Lite - tube style	NONE	<input type="text"/>	<input type="text"/>	\$ 292
②	Original - flat style <i>(recommended for chair back widths over 19")</i>		<input type="text"/>	<input type="text"/>	\$ 292

**Backrest options**

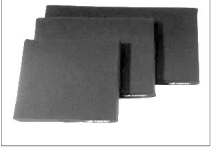


③	Standard Backrest - 6" tube extension for sling back <i>(for raising back height 17" to 22")</i>	NONE	<input type="text"/>	<input type="text"/>	\$ 369
	V-Trak backrest - 8" extension		<input type="text"/>	<input type="text"/>	\$ 543

**Backrest angle**

85°	<input type="text"/>	<input type="text"/>
90°	<input type="text"/>	<input type="text"/>
95°	<input type="text"/>	<input type="text"/>

**Seat Cushion - memory foam with cover**



<b>Seat width</b> ▶	13.75"	15"	15.75"	16.5"	17.75"	19"
<b>Seat depth</b> ▼	35 cm	36 cm	37 cm	38 cm	39 cm	40 cm

*Matches seat depth unless otherwise specified*

<input type="text"/>	<input type="text"/>	\$ 397
----------------------	----------------------	--------

**Additional Seat Cushion Cover**

Standard	NONE	SEFND1050	\$ 219
Incontinent		SEFND1055	\$ 219

**Supports**



①	Knee support - Padded and reinforced		<input type="text"/>	<input type="text"/>	\$ 186
②	Rectangular knee wedge	NONE	2" x 4" SEFND0035	\$ 35	
			2.5" x 4" SEFND0035	\$ 35	
			3" x 4" SEFND0035	\$ 35	
			2" x 6" SEFND0035	\$ 35	
			3" x 6" SEFND0035	\$ 35	
③	Conical knee wedge		2" - 4" x 4" SEFND0035	\$ 35	
			3.5" - 4.5" x 4" SEFND0035	\$ 35	
			5" - 7" x 4" SEFND0035	\$ 35	
④	Knee support - Sport		<input type="text"/>	<input type="text"/>	\$ 295
⑤	Knee support - Polyurethane pad, rigid tube, swing away Gelovations knee block pad mount with cover for swing away Calf strap (see pict #1 below) Chest support belt		Size S (4" - 4.75")	\$ 545	
			Size M (5.5" - 6.5")	\$ 545	
			Gelovations - Pair	\$ 218	
			SEFND0010 X	\$ 79	
			SEFND0030 X	\$ 130	
⑥	Additional Chest support - BodyPoint Neoprene- 4.5" wide - SP110L		<input type="text"/>	<input type="text"/>	\$ 195
⑦	Shoe Holder	3.75" x 7.25" Small Right	<input type="text"/>	<input type="text"/>	\$ 213
		3.75" x 7.25" Small Left	<input type="text"/>	<input type="text"/>	\$ 213
		4.5" x 8" Large Right	<input type="text"/>	<input type="text"/>	\$ 233
		4.5" x 8" Large Left	<input type="text"/>	<input type="text"/>	\$ 233
	Hip Belt - Airplane pull		<input type="text"/>	<input type="text"/>	\$ 129

**Footrest**



①	One piece footplate, fixed		SEFND0015	\$ 285
②	Two-piece footplate, flip-up		<input type="text"/>	\$ 308
③	One piece footplate, flip-up (back)		<input type="text"/>	\$ 219
④	Footplate height adapter <i>(footplate will be 1" narrower than normal)</i>	For seat widths 13.75", 15", 17.75" & 19"	<input type="text"/>	\$ 69
		For seat widths 15.75" & 16.5"	<input type="text"/>	\$ 225
⑤	Easy transfer footplate <i>(extended "L" brackets bring footplate closer to the floor)</i>	Footplate Depth 8"	<input type="text"/>	\$ 388
	Detachable legrest/downposts	Footplate Depth 10.25"	<input type="text"/>	\$ 388
			<input type="text"/>	\$ 149
	Non-slip footplate surface		<input type="text"/>	\$ 129

Footplate angle

80°  
90°  
100°

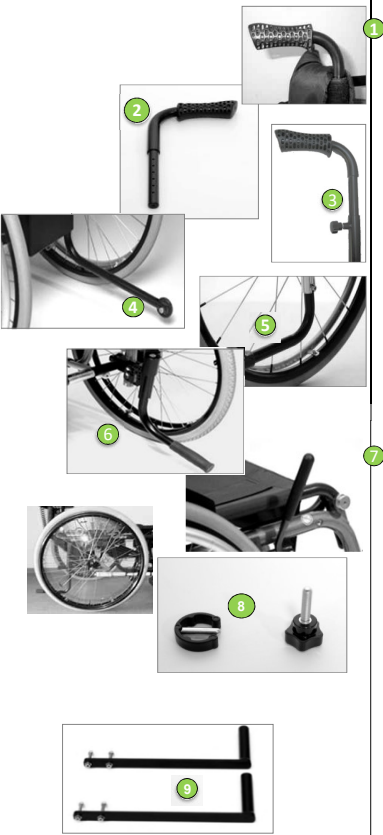
Wheel options



Rear Wheel	Wheel Type	Tire				Handrim				Spoke Color						
		1" Gray High Pressure Pneumatic \$125	1" Blk Marathon High Pressure \$125	1" Black Marathon Solid Poly \$159	1" Gray Solid Poly - Solid Poly \$159	Steel \$132	Steel - embossed \$578	Aluminum Clear Anodized	Maxgrepp - Rubber Coated \$578	Maxgrepp - Ergo Para CP \$995	Natural Fit \$578	Natural Fit /Thumbguard \$995	Natural Fit SLT \$578	White	Red	Black
22"	Standard 18 Spoke - 22", hub black, spoke silver															
	Spinergey 12 Spoke - 22", hub silver \$925															
	Spinergey 18 Spoke - 22", hub silver \$697															
24"	Standard 18 spoke - 24", hub black, spoke silver															
	Spinergey 12 Spoke - 24", hub silver \$925															
	Spinergey 18 Spoke - 24", hub silver \$697															
26"	Standard 18 spoke - 26", hub black, spoke silver															
	Spinergey 12 Spoke - 26", hub silver \$925															
	Spinergey 18 Spoke - 26", hub silver \$697															

4	Camber	0°	3°	6°	Pair			\$	274
	Frog Legs-Black Carbon Fiber Forks & Casters				Pair			\$	525

Accessories



1	Push handles	Pair			\$	175
2	Push handles - 2.75" extension	Pair			\$	338
3	Push handles - detachable, height adjustable 1" - 6"	Pair			\$	349
4	Anti Tips - traditional	Pair			\$	164
5	Tip Aid - attendant	Pair			\$	85
6	Anti Tips - swing away with attendant tip aid XL Adapter*	Pair			\$	450
		Pair			\$	152
	<i>*Necessary with swing away anti-tips for seat depth positions- of 19.5", 20" &amp; 21" when not using E-Fix or E-Motion wheels- Use of E-Fix or E-Motion wheels require Anti-tips provided by Alber</i>					
7	Push to Lock- Wheel lock extensions - 2.5"	Pair			\$	150
	Spoke Guards- Transparent	Pair		WAMP	\$	186
8	Seat depth and footrest quick adjustment kit Includes 8 clamps with post and 4 threaded knobs				\$	129
	Frame reinforcement kit Necessary when e-fix or similar system is mounted Anti-tips - swing away required				\$	290
9	Vehicle tie-down kit Fixed attachment points for chair transport Includes frame reinforcement kit Anti-tips - swing away required. Use of E-Fix or E-Motion wheels require Anti-tips provided by Alber				\$	988

Mandatory if client is transported in vehicle. Chair required to be secured with the Q'Straint 5001-T2 or any restraint system certified by Q'Straint 5001-T2. Occupant must be secured using the Q'Straint Vehicle 3 point or any restraint system certified by ISO 10542/2 standards.

Remarks